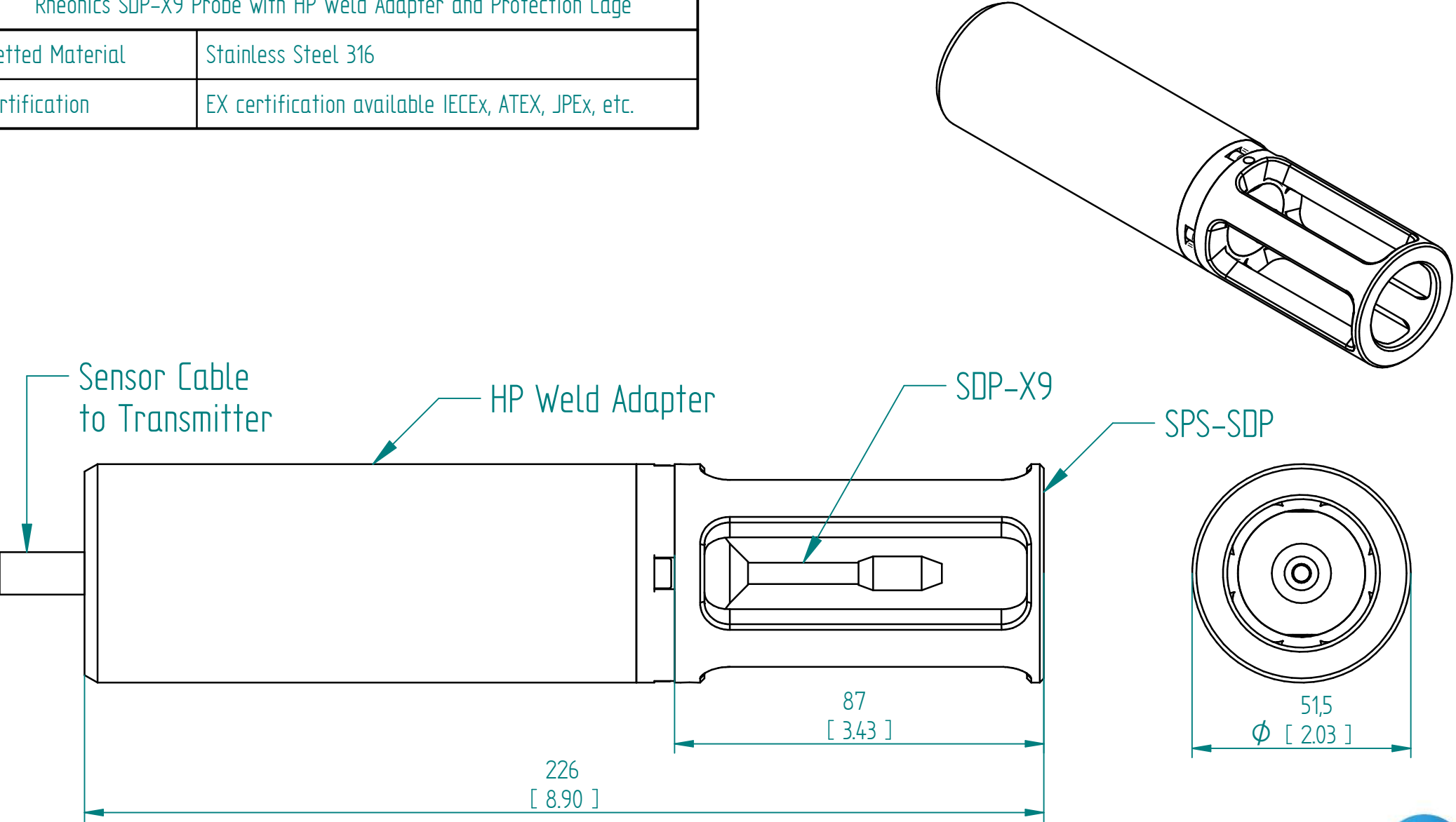


Rheonics SDP-X9 Probe with HP Weld Adapter and Protection Cage	
Wetted Material	Stainless Steel 316
Certification	EX certification available IECEx, ATEX, JPEX, etc.



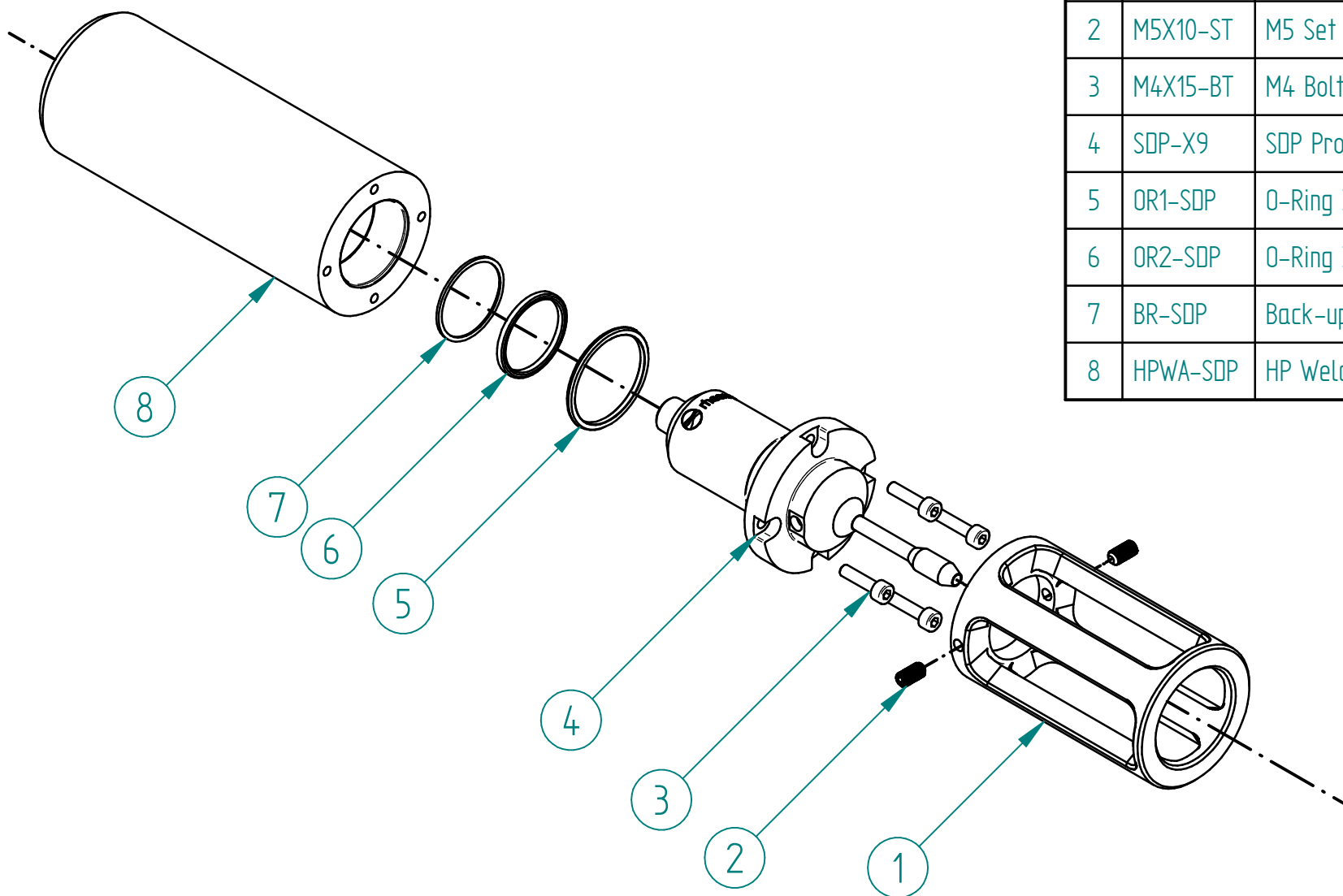
Rheonics Sand Detector  
SDP-X9 Assembly

This drawing remains property of rheonics. It may be neither copied nor informed to third persons or competitors without our approval. ( 2 paragraph 1 fig.7 copyright act of 9th Sept. 1965)

Protected by US and International patents granted and pending

rheonics • Switzerland • USA • [www.rheonics.com](http://www.rheonics.com) • [info@rheonics.com](mailto:info@rheonics.com) +41 52 511 32 00 +1 713 364 5427

Release:2503



N°	Code	Description	Qty.
1	SPS-SDP	Protection Sleeve SDP	1
2	M5X10-ST	M5 Set Screw	2
3	M4X15-BT	M4 Bolt	4
4	SDP-X9	SDP Probe	1
5	OR1-SDP	O-Ring 32x2.5 - 90 shore - FKM	1
6	OR2-SDP	O-Ring 30x2 - 90 shore - FKM	1
7	BR-SDP	Back-up Ring - 30x2 - PTFE	1
8	HPWA-SDP	HP Weld Adapter for SDP	1

## Rheonics Sand Detector Exploded View

This drawing remains property of rheonics. It may be neither copied nor informed to third persons or competitors without our approval. ( 2 paragraph 1 fig.7 copyright act of 9th Sept. 1965)

Protected by US and International patents granted and pending

rheonics • Switzerland • USA • [www.rheonics.com](http://www.rheonics.com) • [info@rheonics.com](mailto:info@rheonics.com) +41 52 511 32 00 +1 713 364 5427

Release:2503

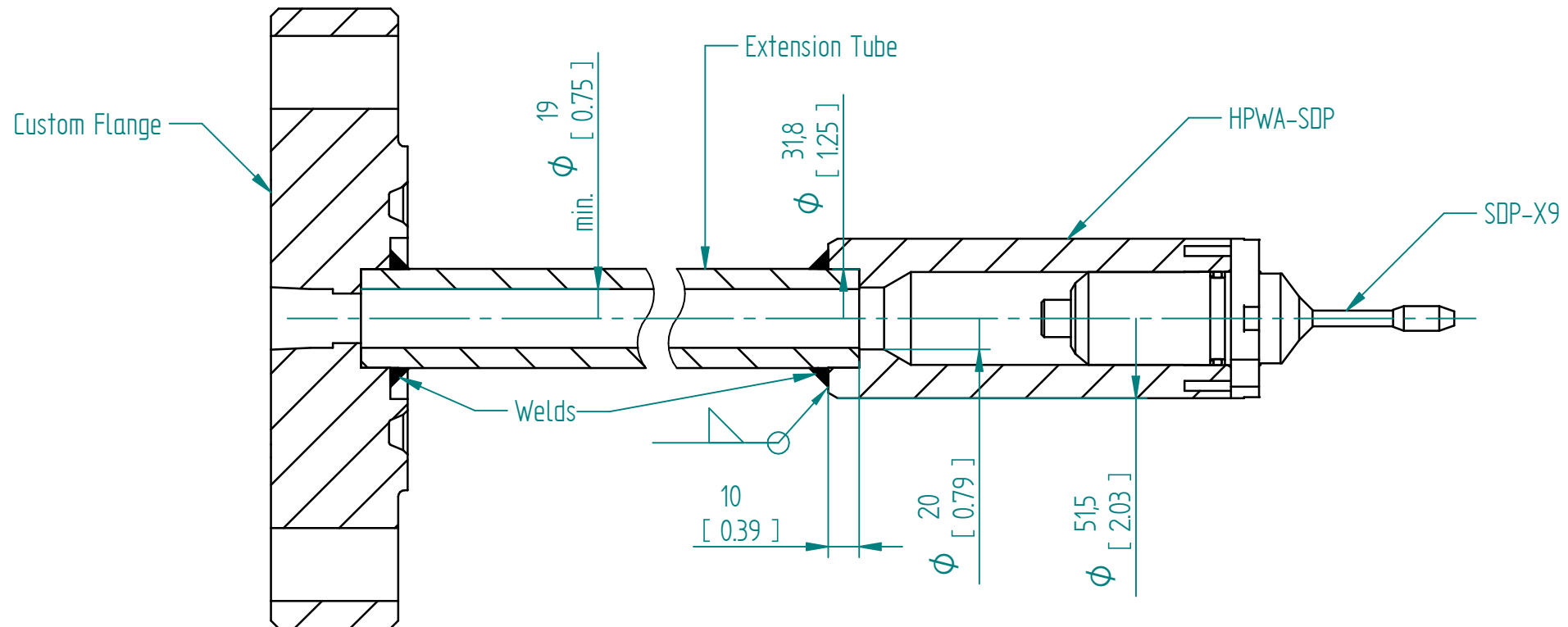


### Weld instructions:

1. Weld an extension tube (ID >19 mm for EX cable) to the SRD Weld Adapter (HPWA-SDP). Tube should be rated for desired pressure. Use Interface drawing below for tube dimensions.

### Assembly instructions:

1. Connect the sensor cable to the SDP-X9 probe back M12 connector
2. Pass the cable through the HP Weld Adapter (HPWA-SDP) and Extension Tube
3. Place the 2 O-Rings (OR1-SDP, OR2-SDP) and Back-up Ring (BR-SDP) on the probe
4. Place and fix the SDP-X9 probe on the HP Weld Adapter using the 4 M4 bolts (M4X15-BT)
6. Use the probe protection sleeve (SPS-SDP) to avoid damaging sensing element, fix the sleeve with the 2 M5 screws (M5X10-ST)



## Rheonics Sand Detector Welding and Assembly

This drawing remains property of rheonics. It may be neither copied nor informed to third persons or competitors without our approval. ( 2 paragraph 1 fig.7 copyright act of 9th Sept. 1965)

Protected by US and International patents granted and pending

rheonics • Switzerland • USA • [www.rheonics.com](http://www.rheonics.com) • [info@rheonics.com](mailto:info@rheonics.com) +41 52 511 32 00 +1 713 364 5427

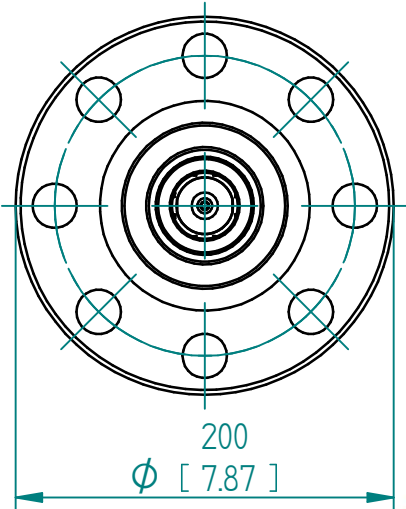
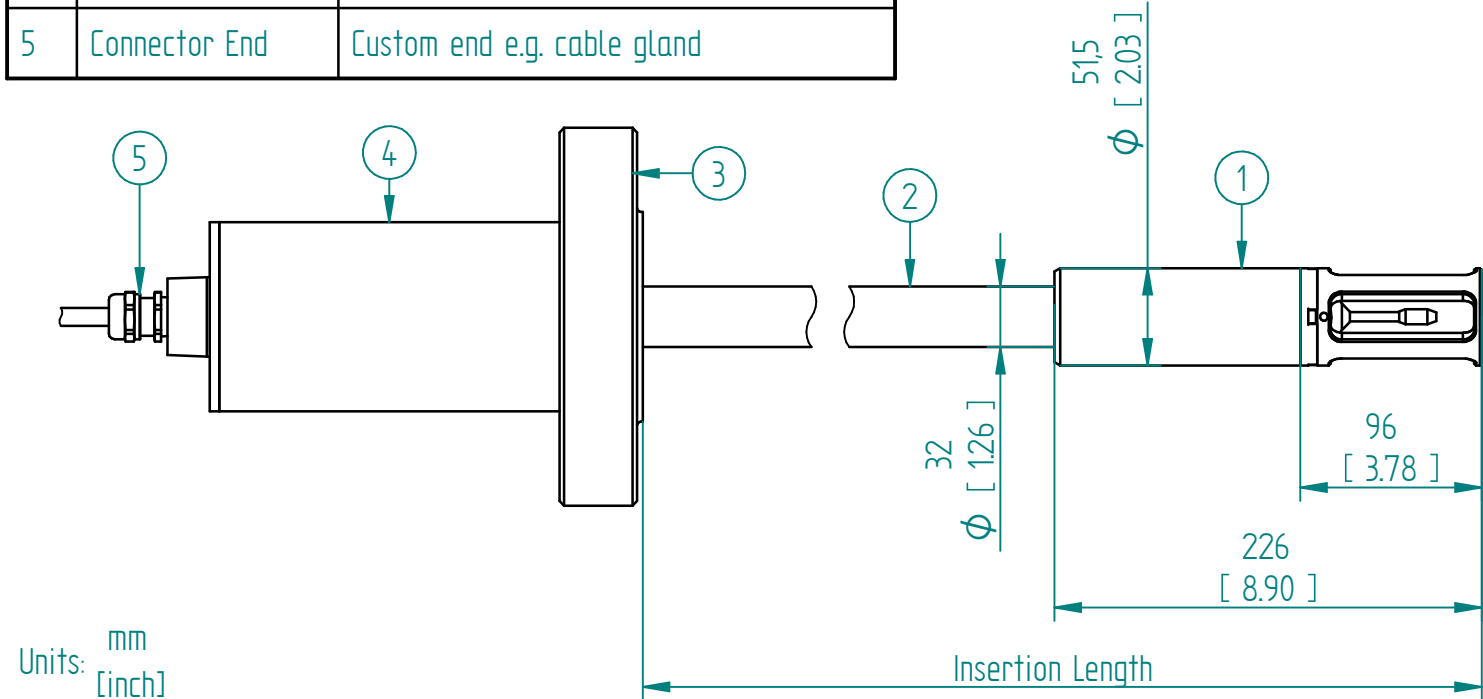
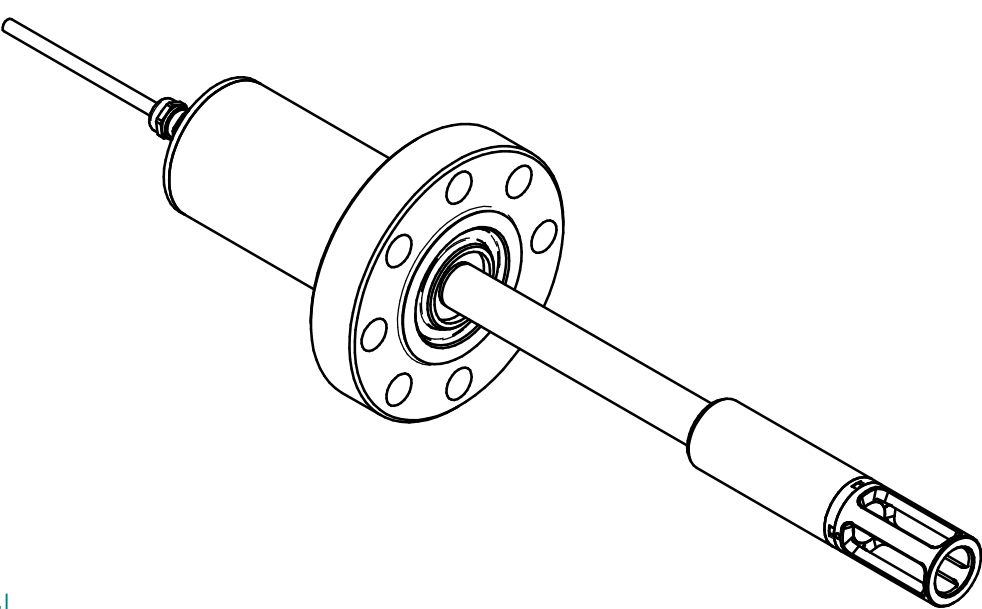
Release:2503

rheonics



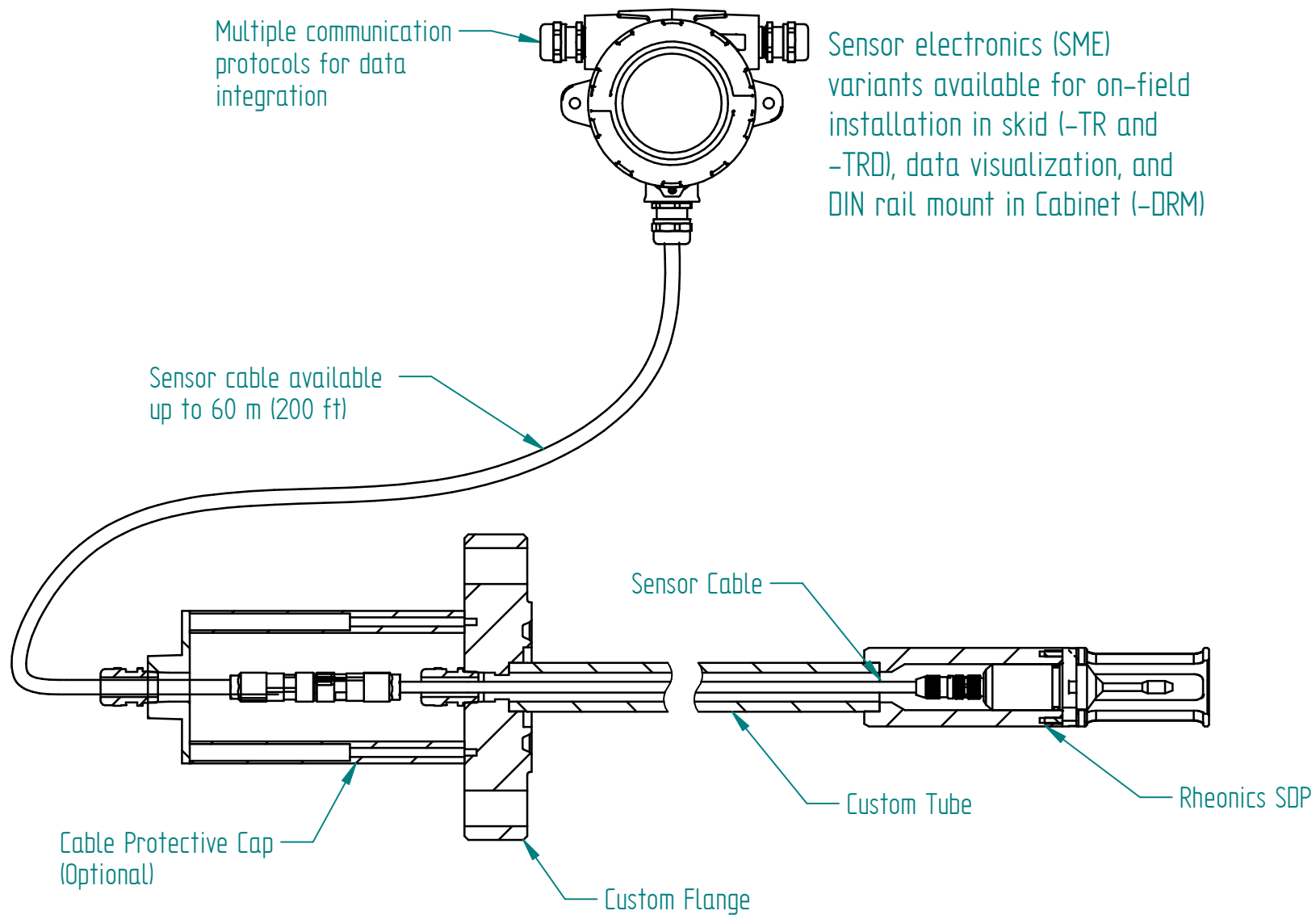
inline process  
density and viscosity  
monitoring

Custom Assembly Example for Rheonics SDP		
N°	Part	Notes
1	Rheonics SDP	Supplied by Rheonics
2	Extension Tube	Custom variable ID/OD and length Material compatible for welding or other connection method to HPWA-SDP
3	Custom Flange	Custom norm, size, PN Material compatible for welding or other connection method to HPWA-SDP
4	Connector Cover	Custom protection for cable connection
5	Connector End	Custom end e.g. cable gland



# Rheonics Sand Detector SDP Custom Assembly Example

This drawing remains property of rheonics. It may be neither copied nor informed to third persons or competitors without our approval. ( 2 paragraph 1 fig.7 copyright act of 9th Sept. 1965)



## Rheonics Sand Detector Assembly Details

This drawing remains property of rheonics. It may be neither copied nor informed to third persons or competitors without our approval. ( 2 paragraph 1 fig.7 copyright act of 9th Sept. 1965)

Protected by US and International patents granted and pending

rheonics • Switzerland • USA • [www.rheonics.com](http://www.rheonics.com) • [info@rheonics.com](mailto:info@rheonics.com) +41 52 511 32 00 +1 713 364 5427

Release:2503