

Complete traceability of paint and coatings from start to finish

RPS **PaintTrack**® monitors paint viscosity with unparalleled resolution and stability enabling tight and consistent color control from start to finish on every coating job. Its accuracy and reproducibility allow rapid and automated setup of stored paint jobs for repeat orders.

Viscosity is the single most important variable for **paint color quality**. The PaintTrack system maintains the highest color quality standards through tight and accurate viscosity control.

Traceability starts at incoming paint control and continues throughout the paint shop floor. Real-time check of paint viscosity at every step of the ecosystem without sampling and manual measurement means rapid job turnover, full traceability and keeping robots painting 24x7.

Painting with correct viscosity improves more than just painting quality. It saves expensive pigments and solvents, improving **profitability**, while ensuring compliance with regulations.

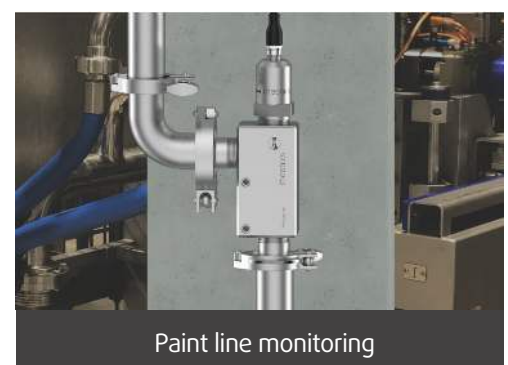
RPS PaintTrack optimizes the use of solvent and paint creating environmentally friendly and **sustainable** painting ecosystem.



Paint storage tank monitoring



Multi-Station PaintTrack HMI



Paint line monitoring

Highest paint quality
Tighter viscosity control gives tighter color control



More efficient operations
Makes viscosity direct bridge to spectro standards



Reduced printing costs
Optimizes paint & solvent use



Easy scalability
Saves and Loads Jobs for repeat orders



Reduce Solvent Emissions
Operators report 40% reduction



Better Operator Safety
Eliminates manual measurement



Completely Automate
Provides the missing link in full paint shop automation



Data-driven Decisions
Tracks and traces every job

PAINTTRACK

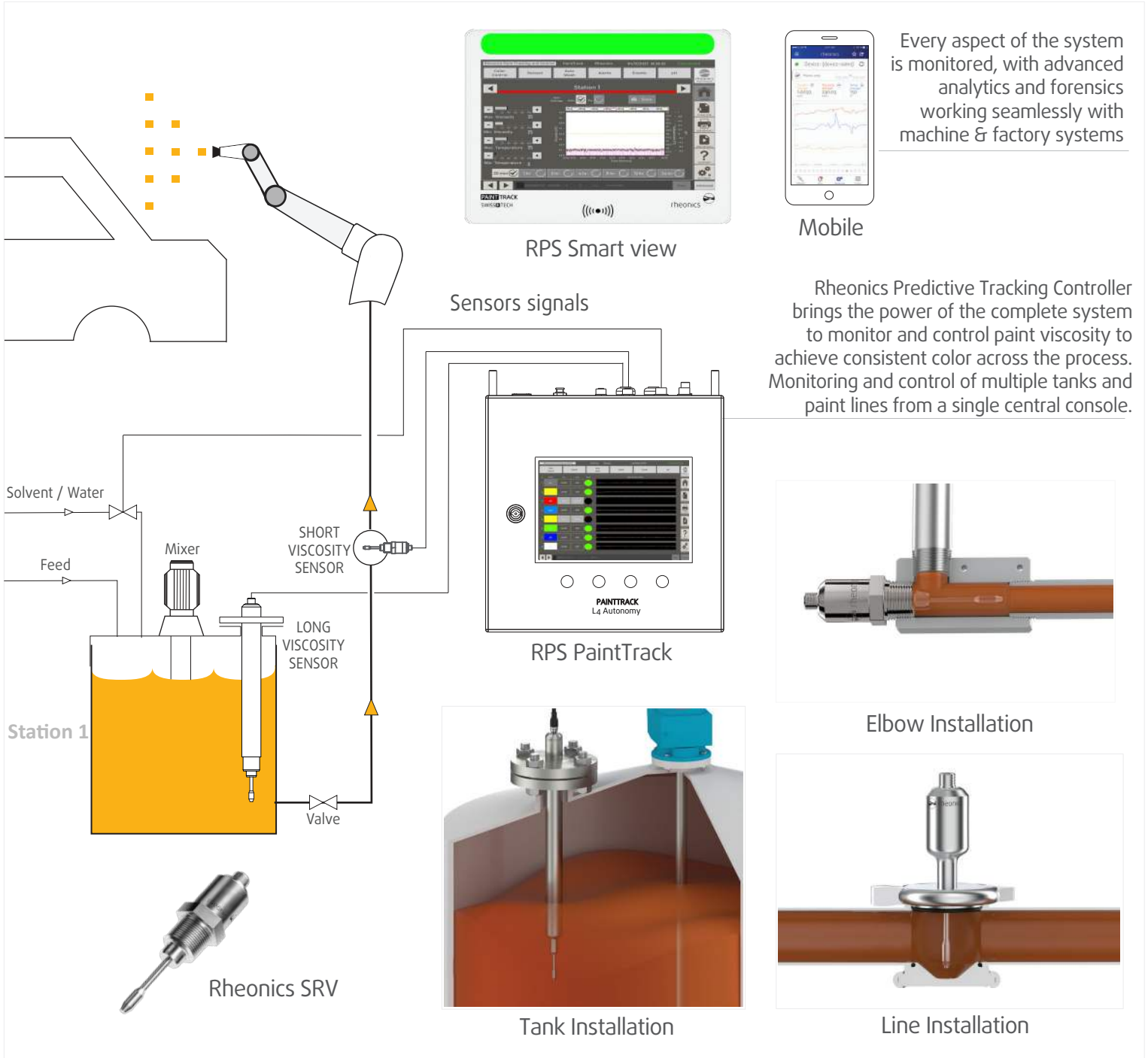
SYSTEM COMPONENTS



Automotive paint viscosity and color control solution

Paint monitoring and control

Level 5 autonomy



Add-Ons



Solvent-based
Water-based



Factory 4.0
Connectivity



Solvent Delivery
& Level system



Thermal
Management

PAINTTRACK

COLORLOCK SOFTWARE



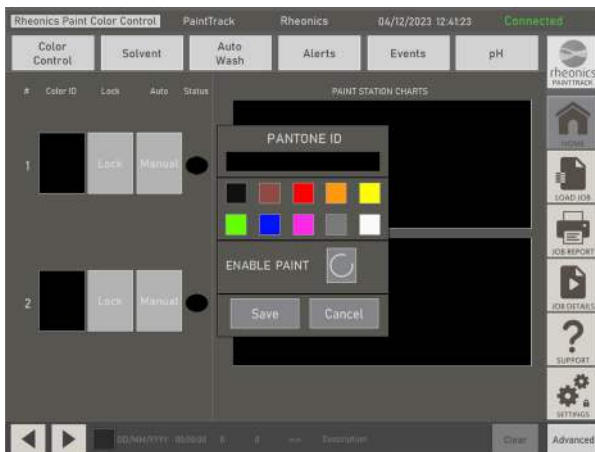
Operating modes of the system

Operator focused design

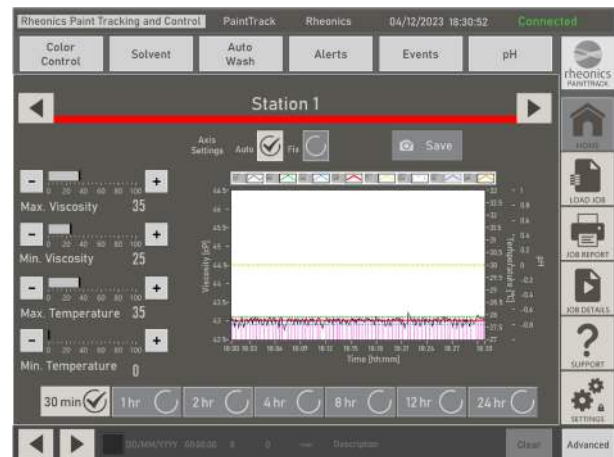
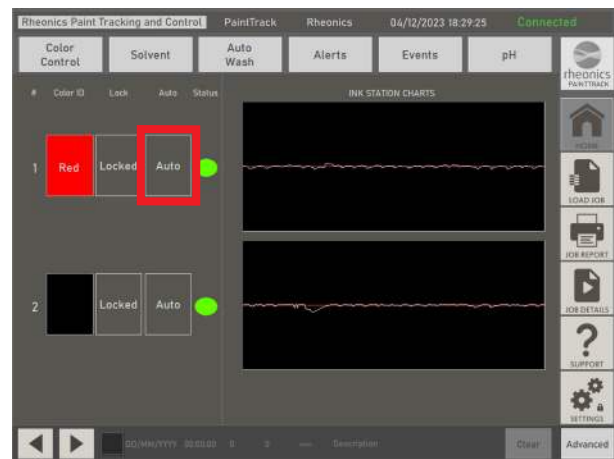
A single button places the full power of the RPS PaintTrack in the hands of the operator.

The operator enables "Paint Station" on the PaintTrack ColorLock screen.

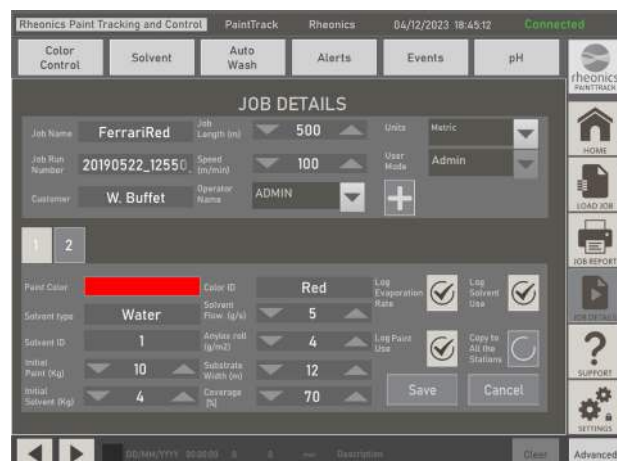
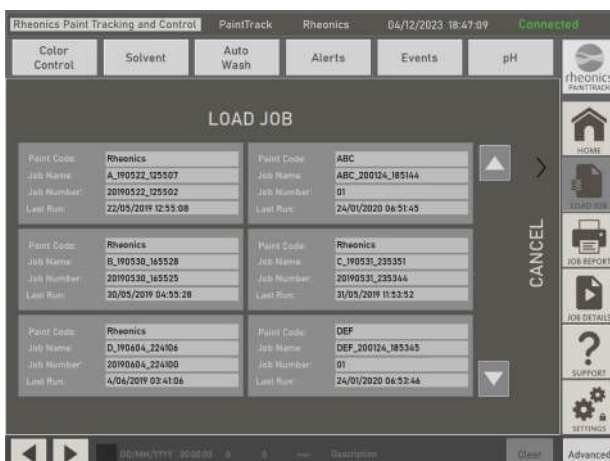
Click on Color ID, then type the Pantone ID, select color, click checkbox to enable station and save.



The 'Auto' button has two functions: selects current measured viscosity value as the setpoint and enables automatic control across the coating run.



The viscosity setpoints, tolerances, pantone ID, color, name of the run, and other job details are stored in a job configuration file. Saved jobs can be loaded into the system to repeat paint orders. Running repeat jobs becomes much simpler, eliminating setup scrap and reducing setup time.



PAINTTRACK

SRV - INLINE PAINT VISCOMETER



Automotive paint viscosity
and color control solution

RPS PaintTrack has at its core a technologically superior, best-in-market viscometer, the SRV. It uses patented and proprietary, ultra-stable resonator technology that adds up to the industry's most robust, repeatable and accurate sensor. The Rheonics SRV sensor is factory calibrated to NIST standards, requiring no re-calibration during its lifetime.

Small form factor and easy installation

Fits in the palm of your hand; more robust than any other viscometer

All 316 stainless steel wetted parts

Hermetically sealed housing, no gaps or moving parts

Accurate, repeatable, reproducible

Newtonian, non-Newtonian, single- and multi-phase fluids

Wide viscosity range

Up to 50,000+ cP, solvent- and water-based, UV paint and adhesives

Built-in fluid temperature measurement

For fast, reliable temperature compensation of viscosity



Focus on paint quality instead of measurement skills!

Achieve exceptionally consistent paint quality, dramatically reduce setup time and optimise use of pigments and solvents. Improve productivity and efficiency through reliable monitoring from incoming to spraying.

- Robust, **maintenance free** inline process viscosity sensor eliminates need for sampling
- Agile viscosity controller **reduces viscosity variation** to less than 1% over entire process
- One-click, **intuitive graphical interface**
- Tighter, more **accurate color** control
- **Reduce setup time** and setup scrap
- **Eliminate car painting problems** like orange peel, clouding/mottling, color variations and solvent pop
- Complete automation for **improved productivity and efficiency**



Contact Information

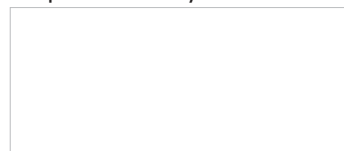
rheonics GmbH

Klosterstrasse 19
8406 Winterthur
Switzerland
+41 52 511 32 00

rheonics Inc.

3 Sugar Creek Center Blvd, Ste 100
Sugar Land, TX 77478
United States of America
+1 713 364 5427

Represented by



www.rheonics.com
info@rheonics.com

