



## Inline viscosity management solution for the gravure printing industry

RPS **InkSight**® measures and controls ink viscosity with unparalleled resolution and stability enabling tight and consistent color control from start to finish on every print job. Its accuracy and reproducibility allow rapid and automatic setup of stored print jobs for repeat orders.

Viscosity is the single most important variable for printing color quality. The RPS InkSight system maintains the highest **color quality** standards through tight and accurate viscosity control.

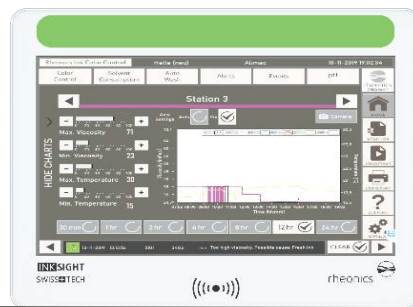
**Efficiency** starts with setting up a job. Being able to nail the proper viscosity for all stations without cut-and-try tinkering means rapid job turnover, keeping machines printing instead of idling.

Printing with correct viscosity improves more than just print quality. It saves expensive pigments and solvents, improving **profitability**.

RPS InkSight optimizes the use of solvent and ink creating environmentally friendly and **sustainable** printing.



Inline ink monitoring and viscosity control



ColorLock Software on Smartview



Plant supervisor's dashboard

**Highest print quality**  
Tighter viscosity control gives tighter color control



**More efficient operations**  
Makes viscosity direct bridge to spectro standards



**Reduced printing costs**  
Optimizes ink & solvent use



**Easy scalability**  
Saves and Loads Jobs for repeat orders



**Reduce Solvent Emissions**  
Operators report 40% reduction



**Better Operator Safety**  
Eliminates manual measurement



**Completely Automate**  
Provides the missing link in full press automation

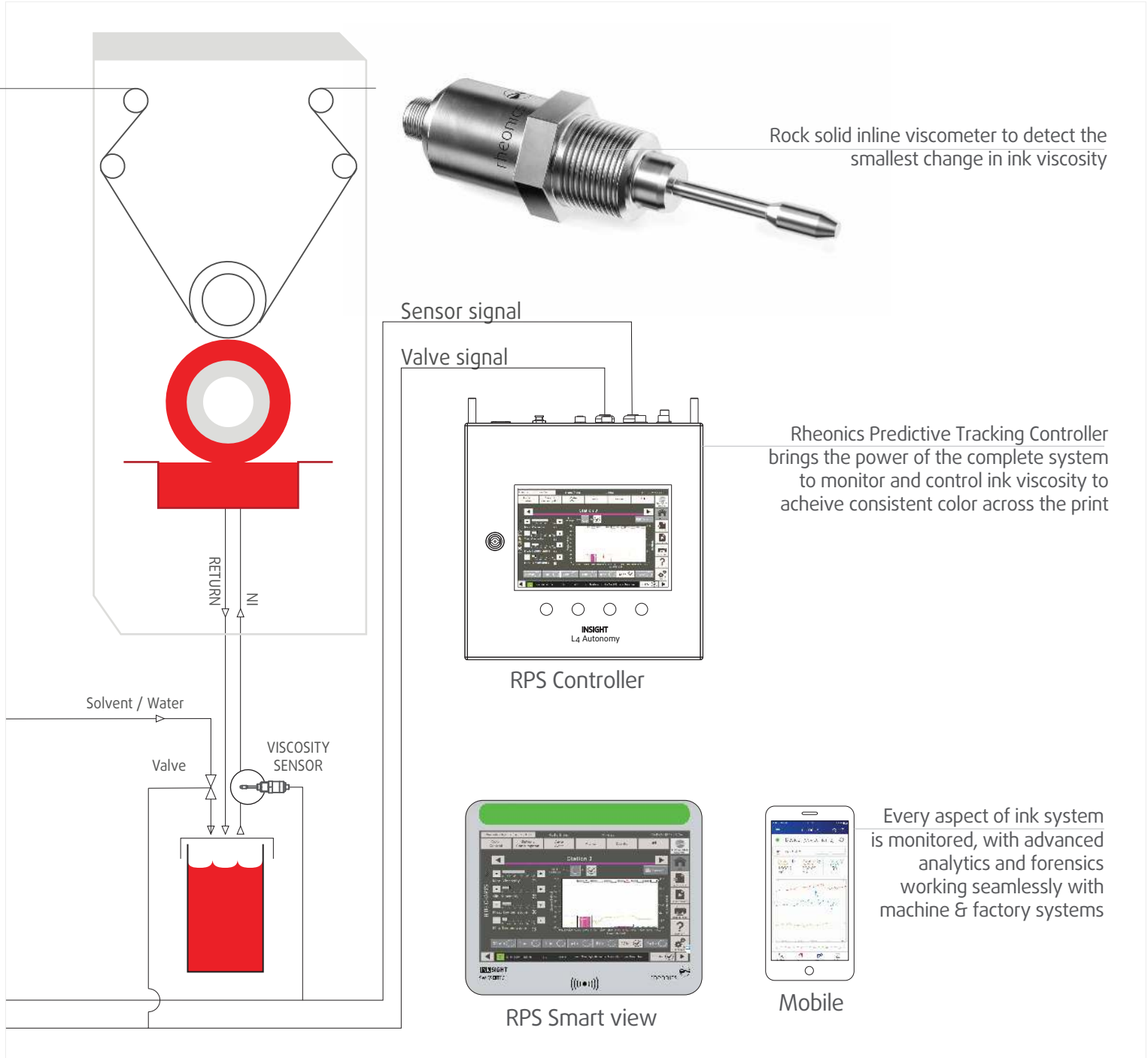


**Data-driven Decisions**  
Tracks and traces every job



## Automatic ink control

## Level 5 autonomy



## Add-Ons



Smart wash



pH system



Solvent Delivery  
& Level system



Thermal  
Management

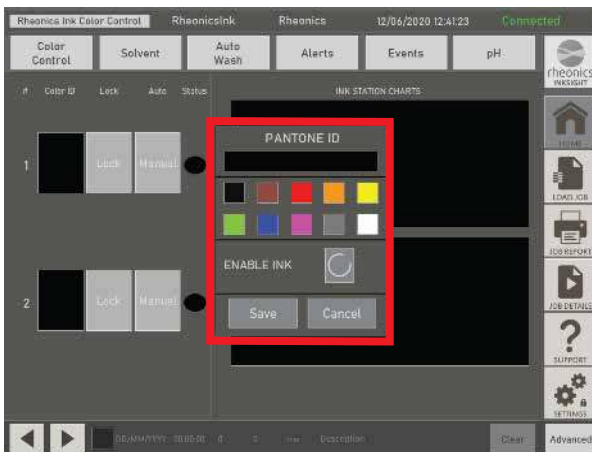
## Operating modes of the system

### Operator focused design

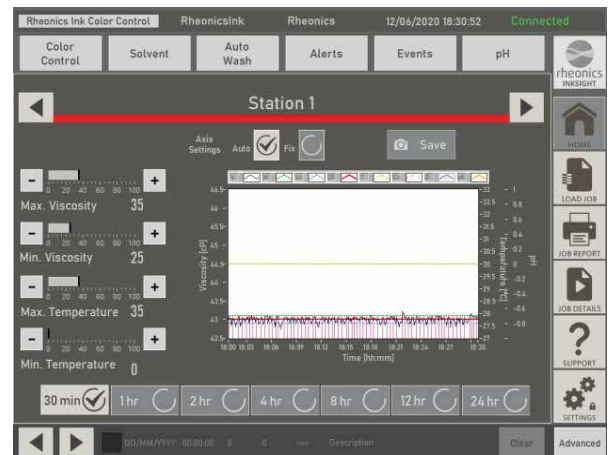
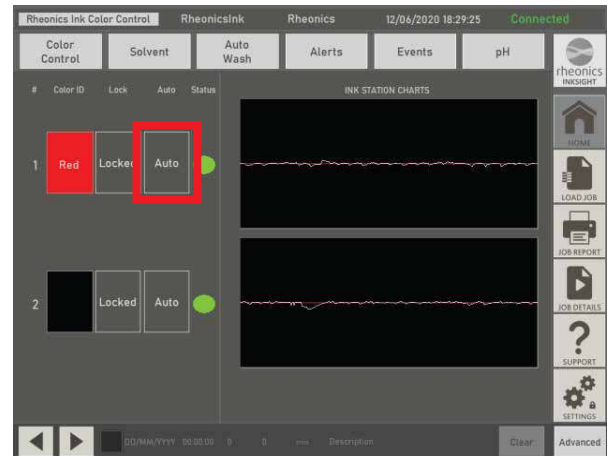
A single button places the full power of the RPS InkSight in the hands of the operator.

The operator enables "Ink Station" on the RPS InkSight ColorLock screen.

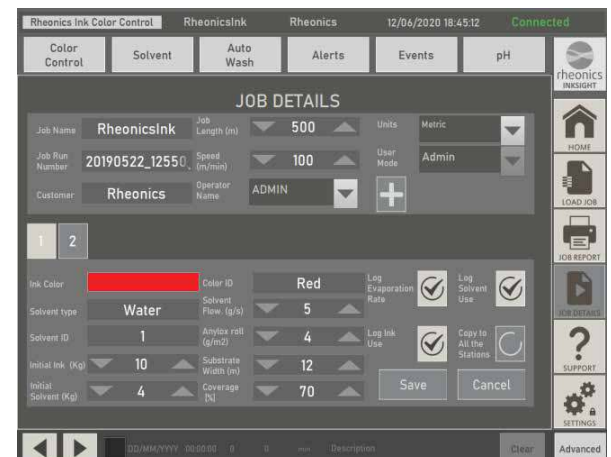
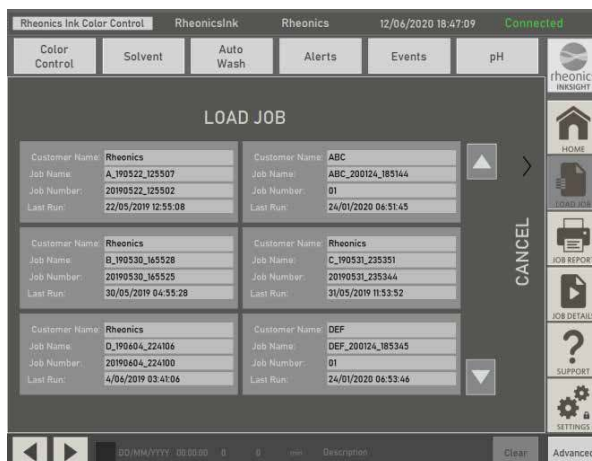
Click on Color ID, then type the Pantone ID, select color, click checkbox to enable station and save.



The 'Lock' button has two functions: selects current measured viscosity value as the setpoint and enables automatic control across the print run.



The viscosity setpoints, tolerances, pantone ID, color, name of the run, and other job details are stored in a job configuration file. Saved jobs can be loaded into the system to print repeat orders. Running repeat jobs becomes much simpler, eliminating setup scrap and reducing setup time.





rheonics

Ink viscosity  
and color control solution

# INKSIGHT

## SRV - INLINE INK VISCOMETER

RPS InkSight has at its core a technologically superior, best-in-market viscometer, the SRV. It uses patented and proprietary, ultra-stable resonator technology that adds up to the industry's most robust, repeatable and accurate sensor. The Rheonics SRV sensor is factory calibrated to NIST standards, requiring no re-calibration during its lifetime.

### Small form factor and easy installation

Fits in the palm of your hand; more robust than any other viscometer

### All 316L stainless steel wetted parts

Hermetically sealed housing, no gaps or moving parts

### Accurate, repeatable, reproducible

Newtonian, non-Newtonian, single- and multi-phase fluids

### Wide viscosity range

Up to 50,000+ cP, solvent- and water-based, UV inks and adhesives

### Built-in fluid temperature measurement

For fast, reliable temperature compensation of viscosity



## Focus on print quality instead of measurement skills!

Achieve exceptional print quality, dramatically reduce setup time and optimise use of pigments and solvents. Improve productivity and efficiency through reliable automation of color control on your press.

- Robust, **maintenance free** viscosity sensor eliminates need for re-calibration
- Agile viscosity controller **reduces viscosity variation** to less than 1% over entire print run
- One-click, **intuitive graphical interface**
- Tighter, more **accurate color density** and dE control
- **Reduce setup time** and setup scrap
- Complete automation for **improved productivity and efficiency**

## Contact Information

### rheonics GmbH

Klosterstrasse 19  
8406 Winterthur  
Switzerland  
+41 52 511 32 00

### rheonics Inc.

3 Sugar Creek Center Blvd, Ste 100  
Sugar Land, TX 77478  
United States of America  
+1 713 364 5427

www.rheonics.com  
info@rheonics.com

